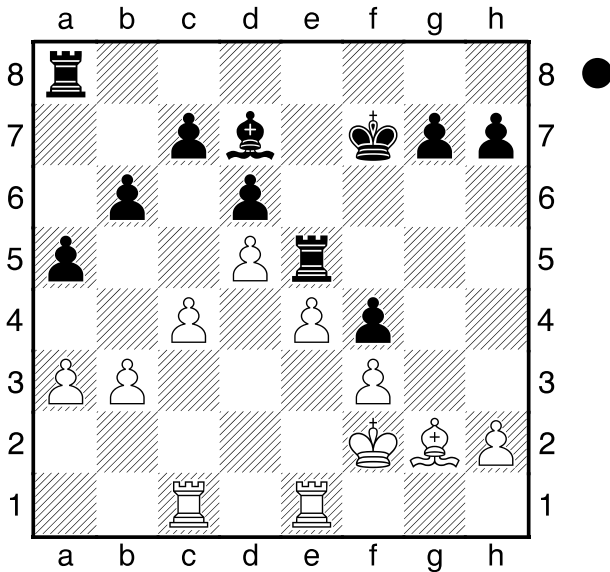


**schlechter Läufer 1**  
[Frank, Betschinger]



nach Topschach.de - Schachstrategie 1  
**1...Kf6 2.Ke2 Th5 3.Th1 Ke5 4.Kd3 h6 5.h3? Tg5 6.Th2 Tg3 7.h4 Tg8 8.Ke2 g5 9.hxg5 hxg5 10.Kf2 g4 11.Th5+ Kd4 12.Td1+?**

[ 12.Th7 gxf3 13.Lxf3 Lg4 14.Lxg4 T8xg4 15.Txc7 Th4 16.Td1+ Kc3 17.Td7 ]

**12...Kc3 13.Th7 gxf3 14.Lf1**  
 [ 14.Lxf3 Txf3+ 15.Kxf3 Lg4+ 16.Kxf4 Lxd1 ]

**14...Kc2 15.Td3**  
 [ 15.Ta1 Lg4 16.Txc7 Th8 ]

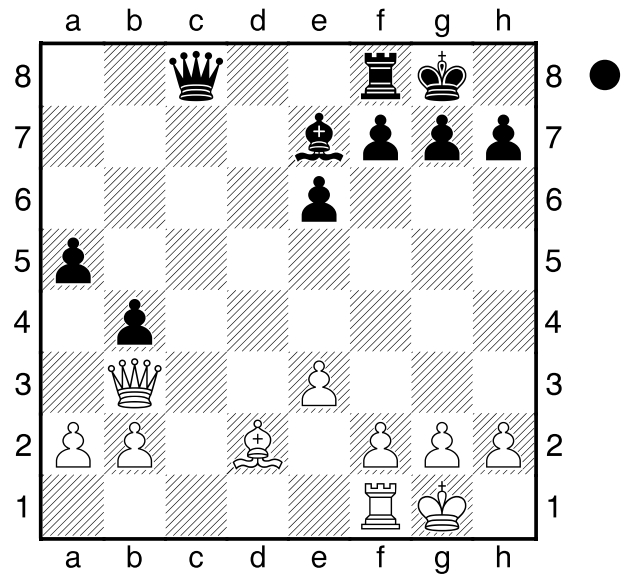
**15...Lh3 16.Txf3 Txf3+ 17.Kxf3 Lxf1**

□ schlechter Läufer 2  
 ■ Aljechin

[Frank, Betschinger]

(Diagramm)

Blitz 3m 600MB, Fritz12.ctg, DESKTOP-L3MOL2E  
 nach Topschach.de - Schachstrategie 1  
**1 1...Dd7 0 2.Lc1 a4 3.Dc2 Tc8**



**4.De2 Dd5 5.a3 b3 6.e4 Dc4 7.De1 Dc2 8.f4 Lc5+ 9.Kh1 Ld4 10.f5 Lxb2 11.Lxb2 Dxb2**

E01

**schlechter Läufer 3**  
[Frank, Betschinger]

Blitz 3m 600MB, Fritz12.ctg, DESKTOP-L3MOL2E

nach Topschach.de Schachstrategie 1  
**1.d4 0 d5 2.c4 c6 3.Sf3 Sf6 4.Dc2 e6 5.g3 Sbd7 6.Lg2 Ld6 7.0-0 0-0 8.Lf4 Dc7 9.Lxd6 Dxd6 10.Sbd2 h6? besser b6, mit Lc8 nach a6 11.e4 dxe4 12.Sxe4 Sxe4 13.Dxe4 Sf6 14.De2 Ld7 15.Tad1 Tad8 16.Se5 Lc8 17.c5! Dc7 18.b4 Sd5 19.Db2 Tde8 20.Tfe1 Dd8 21.a4 a6 22.Sc4 Sc7 23.h4 Df6 24.Te5 Td8 25.Tde1 Dg6 26.Le4 f5**

[ 26...Dg4 27.Se3 Dh3 28.Lg2 ]  
**27.Lg2 Dg4 28.Sd6 Td7 29.Dd2 g5 30.hxg5 hxg5 31.Dd1 Dxd1 32.Txd1 g4 33.Kf1 Kg7 34.Ke2 Kf6 35.Th1 Kg6 36.Kd3 Th7 37.Txh7 Kxh7 38.Te1 Td8 39.Ke3 Se8 40.Sc4 Ld7 41.Kf4 Tc8 42.Ke5 Tc7 43.Sb6 Kg7 44.Lf1**

